



ISO 9001:2015 CERTIFIED COMPANY

ADDING TOUCH OF QUALITY,
WE CARE FOR YOUR DREAMS

IS : 15744



CM/L :- 7900121111

POLYMER MODIFIED
TILE ADHESIVE

POLYMER MODIFIED
TILE GROUT

ADMIXTURE

WATER
PROOFING

BLOCK JOINT MORTAR

PU ADHESIVE

WALL PUTTY

G40 GEL

ABOUT US

“Griffon” brand owned and operate by an ISO 9001:2015 certified Partnership Firm known as Griffon Chemico Industries which is duly registered Partnership Firmsituated atMorbi, Gujarat.Our firm hasstarted business in the calendar year 2020 by six young and dynamic partners having sound knowledge and experience of the products being manufactured & marketed. Our formula for development of products in the manufacturing plant is quite innovative which strives our brand to reach perfection and national recognition. We are using latest technology for product manufacturing.

Our main focus areas are consistency in product quality and continued product innovation which makes our brand products quite different. We are working with the motto of providing products to our customers as cheaper as possible.

WE HELP TO

AN ARTIEST TO BUILDING A QUALITY
ART OF ARCHITECTURE

Our Collection Offers a *Wide Range* of Products for Achieve Tiling Perfection

- **G40 GEL**
- **TILE ADHESIVE**
- **EPOXY GROUT**
- **TILE GROUT**
- **GROUT ADMIX PLUS**
- **PU ADHESIVE**
- **BLOCK JOINT MORTAR**
- **TILE CLEANER**
- **WATER PROOFING**
- **WALL PUTTY**
- **TILE EQUALIZER**
- **TILE SPACERS**

Application Areas



POLYMER MODIFIED
TILE ADHESIVENet wt.
20kg

NSA GP is a polymer modified, grey cement, based thin set tiles adhesive for fixing high porosity tiles like ceramic/clay tiles, terra-cotta and quarry tiles of regular sizes. It is suitable for horizontal surface over the cementitious substrate for indoor application in dry areas.

NSA GP

AREA OF USE

Material to be fixed	On surface/substrate	Area of application
All types of ceramic tiles, terracotta tiles, vitrified tiles etc.	Cement based screeds, cement based plasters, concrete surfaces, bricks, other cement based surfaces.	Flooring and walls for internal application

*only recommended for eternal floor application. Consult with griffon technical team for fixing on external wall application.

FEATURES AND ADVANTAGES

- Easy to use- just add water on site, ready to use.
- Can be used in internal areas, for floor application as well as wall application.
- Good adhesive bond strength & bonds to various cement based substrates.
- Self curing properties, which allows hassle- application with minimum labor.
- NSA GP meets the adhesion requirements as per IS 15477:2019 TYPE 1.

TECHNICAL INFORMATION
APPLICATION PROPERTIES

TESTING PROPERTIES	TEST RESULTS
Tentative mixing ratio(Powder:Water)	3:1 by volume 1:24 by weight
Open time IS 15477:2019	Approx. 30 minutes
Adjustability IS 15477:2019	Approx. 35 minutes
Pot life	Approx. 90 minutes
Adhesive thickness	3-12 mm ²
Setting/trafficable/grouting time	4 hours

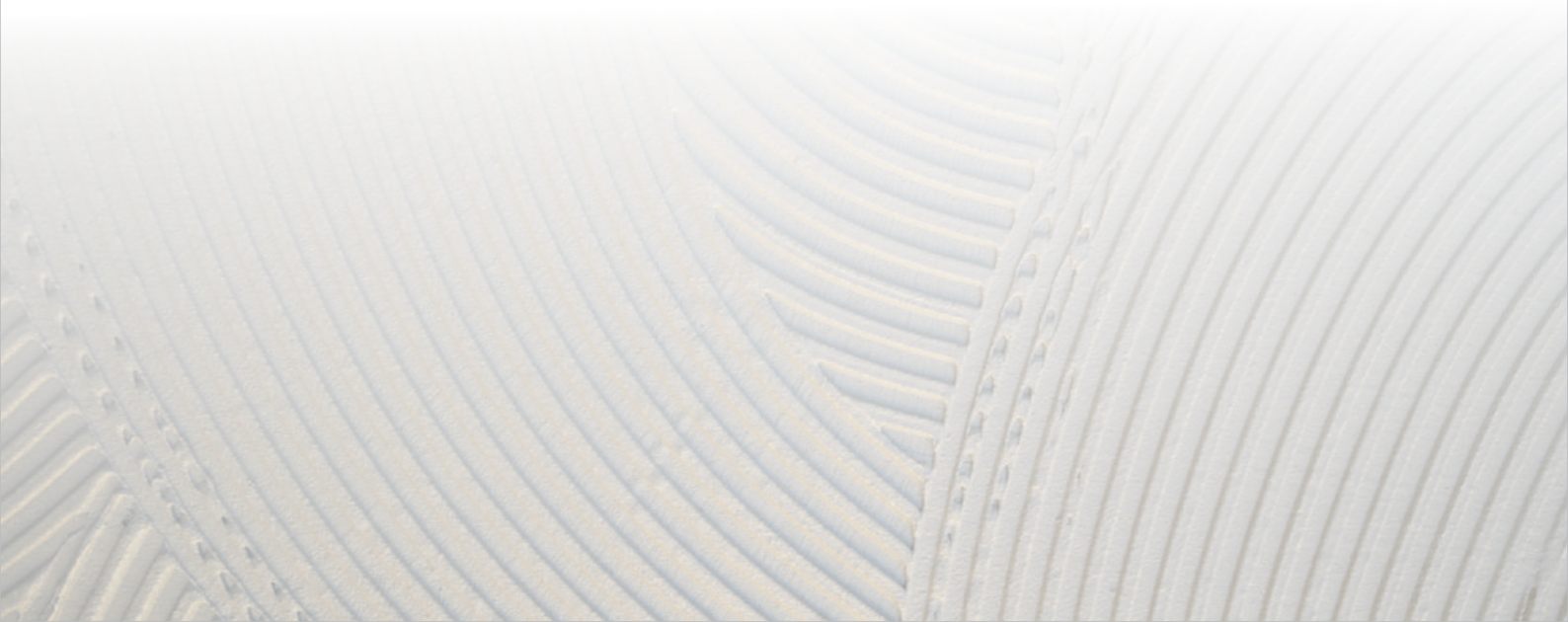
Performance properties as per IS 15477:2019 (TYPE 1)

TESTING PROPERTIES	REQUIREMENTS	TEST RESULTS
Tensile adhesion dry condition	≥0.5 N/mm ²	0.64 N/mm ²
Shear adhesion dry condition	≥1.0 N/mm ²	1.24 N/mm ²
Shear adhesion at wet condition	N/A	1.0-1.30 N/mm ²
Shear adhesion at heat aging condition	N/A	1.0-1.35 N/mm ²

Notes: test results are indicatives as per testing methods specified in standard condition & testing machine etc. Actual field performance will depends on installation methods and site condition.

COVERAGE ESTIMATES

PACK SIZE	COVERAGE
20 kgs.	Approximately 40-45 sq.ft /20kgs. @ 4mm thickness, when using a thin trowel





POLYMER MODIFIED TILE ADHESIVE



NSA GOLD is a highly polymer modified, thin set adhesive for fixing all types of ceramic, semi-vitreous, vitrified tiles and natural stones, on variety of surfaces. It is suitable for both horizontal and vertical surface application, in dry as well as wet condition areas in indoor. It is also recommended for tile on tile application.

NSA GOLD

AREA OF USE

Material to be fixed	On surface/substrate	Area of application
All types of ceramic tiles, terracotta tiles, vitrified tiles, bricks, pavers, large format tiles, marble and natural stones, low thickness slab etc.	Cement based screeds, cement based plasters, Gypsum based renders, concrete surfaces, bricks, existing tiles & stones, other cement based surfaces.	Flooring and walls for internal area & external area, spas, fountains & swimming pools etc., terrace, balcony, window and door frame, domestic applications, commercial applications.

*only recommended for external floor application. Consult with griffon technical team for fixing on external wall application.

FEATURES AND ADVANTAGES

- Easy to use- just add water on site, ready to use
- High polymer modified provides high adhesion and strength, which allows to bond with various surface for fixing variety of tiles and stones.
- Slip/sag resistance provides hassle free application on vertical walls.
- NSA GOLD meets the adhesion requirements as per IS 15477:2019 TYPE 2.

TECHNICAL INFORMATION
APPLICATION PROPERTIES

TESTING PROPERTIES	TEST RESULTS
Tentative mixing ratio (Powder:Water)	3:1 by volume 1:24 by weight
Open time IS 15477:2019	Approx. 30 minutes
Adjustability IS 15477:2019	Approx. 25 minutes
Pot life (@ 27° Centigrade)	Approx. 90 minutes
Adhesive thickness	3-12 mm
Setting/trafficable/grouting time	24 hours

Performance properties as per IS 15477:2019 (TYPE 2)

TESTING PROPERTIES	REQUIREMENTS	TEST RESULTS
Tensile adhesion dry condition	≥1.0 N/mm ²	1.27 N/mm ²
Tensile adhesion at wet condition	≥1.0 N/mm ²	1.23 n/mm ²
Shear adhesion dry condition	≥1.25 N/mm ²	1.41 N/mm ²
Shear adhesion at wet condition	≥1.0 N/mm ²	1.29 N/mm ²
Shear adhesion at heat aging condition	≥1.0 N/mm ²	1.31 N/mm ²
Slip resistance	0.5 mm max	0.21 mm
Deformability	2.5-5.0 mm max	3.43 mm

Notes: test results are indicatives as per testing methods specified in standard condition & testing machine etc. Actual field performance will depends on installation methods and site condition.

COVERAGE ESTIMATES

PACK SIZE	COVERAGE
20 kgs.	Approximately 40-45 sq.ft /20kgs. @ 4mm thickness, when using a thin trowel





**POLYMER MODIFIED
TILE ADHESIVE**

CM/L :- 7900121111

C2TE S1



GREY

WHITE

NSA DIAMOND is a high polymer modified & high flexible adhesive with enhanced properties of slip resistance, extended open time & excellent adhesion strength which require for fixing large format tiles, natural stones, slim tiles on both horizontal and vertical surface for internal and external application.

NSA DIAMOND

AREA OF USE

Material to be fixed	On surface/substrate	Area of application
All types of ceramic tiles, terracotta tiles, vitrified tiles, bricks, pavers, large format tiles, marble and natural stones, low thickness slab etc.	Cement based screeds, cement based plasters, Gypsum based renders, concrete surfaces, bricks, existing tiles & stones, other cement based surfaces.	Flooring and walls for internal area & external area sanuvas, spa, fountains & swimming pools etc., terrace, balcony, window and door frame, domestic applications, commercial applications.

*Recommended for external and internal application. Consult with griffon technical team.

FEATURES AND ADVANTAGES

- Easy to use- just add water on site, ready to use
- High polymer modified provides high adhesion and strength, which allows to bond with various surface for fixing variety of tiles and stones.
- Slip/sag resistance provides hassle free application on vertical walls.
- Suitable for wet area & commercial floor too.
- NSA Diamond meets the adhesion requirements as per IS 15477:2019 TYPE 3

TECHNICAL INFORMATION
APPLICATION PROPERTIES

TESTING PROPERTIES	TEST RESULTS
Tentative mixing ratio (Powder:Water)	3:1 by volume 1:0.24 by weight
Open time IS 15477:2019	Min. 30 minutes
Adjustability IS 15477:2019	Approx. 25 minutes
Pot life (@ 27° Centigrade)	Approx. 90 minutes
Adhesive thickness	3-12 mm
Setting/trafficable/grouting time	24 hours

Performance properties as per IS 15477:2019 (TYPE 3)

TESTING PROPERTIES	REQUIREMENTS	TEST RESULTS
Tensile adhesion dry condition	≥1.5 N/mm ²	1.66 N/mm ²
Tensile adhesion at wet condition	≥1.0 N/mm ²	1.32 n/mm ²
Shear adhesion dry condition	≥1.5 N/mm ²	1.71 N/mm ²
Shear adhesion at wet condition	≥1.0 N/mm ²	1.32 N/mm ²
Shear adhesion at heat aging condition	≥1.0 N/mm ²	1.34 N/mm ²
Slip resistance	0.5 mm max	0.20 mm
Deformability	2.5-5.0 mm max	3.44 mm

Notes: test results are indicatives as per testing methods specified in standard condition & testing machine etc. Actual field performance will depends on installation methods and site condition.

COVERAGE ESTIMATES

PACK SIZE	COVERAGE
20 kg.	Approximately 40-45 sq.ft /20kgs. @ 4mm thickness, when using a thin trowel





POLYMER MODIFIED TILE ADHESIVE



GREY

WHITE

NSA PLATINUM is a high polymer modified & high flexible adhesive with enhanced properties of slip resistance, extended open time & excellent adhesion strength which require for fixing large format tiles, natural stones, slim tiles on both horizontal and vertical surface for internal and external application.

NSA PLATINUM

AREA OF USE

Material to be fixed	On surface/substrate	Area of application
All types of ceramic tiles, terracotta tiles, vitrified tiles, glass mosaic tiles, large format tiles, marbel and natural stones, terrazzo, low thickness slab etc.	Cement based screeds, cement based plasters, Gypsum based renders, concrete surfaces, metal surface(iron, steel, copper, aluminum etc.), existing tiles, stone, plywood, mdf & wooden derivative, rubber, pvc, glass etc.	Floor and walls, internal external area, window/door frame, vibrational area, kitchens, balconies, flat roofs, domes, terrace, domestic application, commercial application, industrial application.

*Recommended for external and internal application. Consult with griffon technical team.

FEATURES AND ADVANTAGES

- Easy to use- just add water on site, ready to use
- High polymer modified provides high adhesion and strength, which allows to bond with various surface for fixing variety of tiles and stones.
- Slip/sag resistance provides hassle free application on vertical walls.
- Suitable for wet area & commercial floor too.

TECHNICAL INFORMATION
APPLICATION PROPERTIES

TESTING PROPERTIES	TEST RESULTS
Tentative mixing ratio (Powder : Water)	3:1 by volume 1:0.24 by weight
Open time	Min. 30 minutes
Adjustability	Approx. 30 minutes
Pot life (@ 27° Centigrade)	Approx. 90 minutes
Adhesive thickness	3-12 mm
Setting/trafficable/grouting time	24 hours

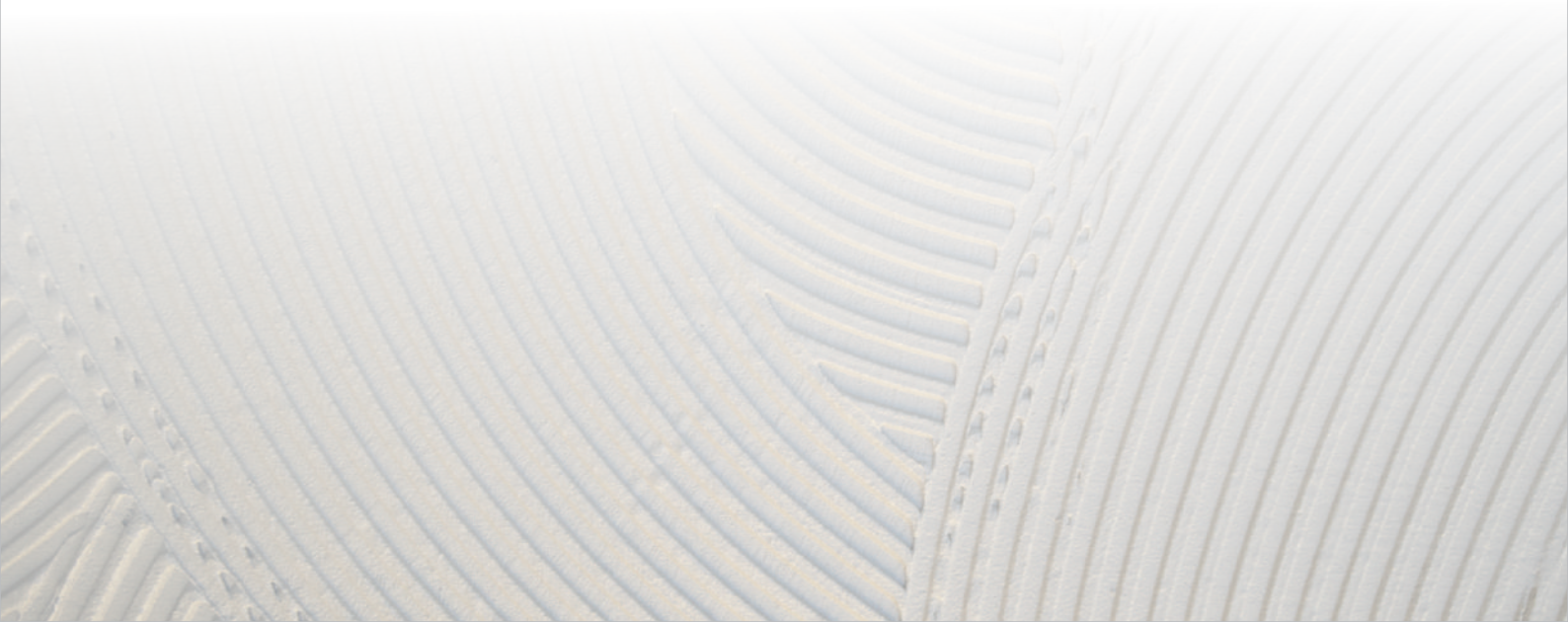
Performance properties as per IS 15477:2019 (TYPE 4)

TESTING PROPERTIES	REQUIREMENTS	TEST RESULTS
Tensile adhesion dry condition	≥1.5N/mm ²	1.71 N/mm ²
Tensile adhesion at wet condition	≥1.0 N/mm ²	1.35 N/mm ²
Shear adhesion dry condition	≥1.5 N/mm ²	1.74 N/mm ²
Shear adhesion at wet condition	≥1.0 N/mm ²	1.33 N/mm ²
Shear adhesion at heat aging condition	≥1.0 N/mm ²	1.36 N/mm ²
Slip resistance	0.5 mm max	0.15 mm
Deformability	2.5-5.0 mm max	3.55 mm

Notes: test results are indicatives as per testing methods specified in standard condition & testing machine etc. Actual field performance will depends on installation methods and site condition.

COVERAGE ESTIMATES

PACK SIZE	COVERAGE
20 kg.	Approximately 40-45 sq.ft /20kgs. @ 4mm thickness, when using a thin trowel





G40 Gel is multipurpose gel adhesive for fixing ceramic, porcelain and natural stone of all type and formats.

G40 GEL

AREA OF USE

Material to be fixed	On surface/substrate	Area of application
All types of ceramic tiles, terracotta tiles, vitrified tiles, glass mosaic tiles, large format tiles, marbel and natural stones, terrazzo, low thickness slab, laminated stoneware etc.	Cement based screeds, cement based plasters, Gypsum based renders, concrete surfaces, bricks, existing tiles etc.	Floor and walls, internal external area, window/door frame, vibrational area, kitchens, balconies, flat roofs, Domes, terrace, domestic application, commercial application, industrial application.

FEATURES AND ADVANTAGES

- Easy to use- just mix powder and water.
- High adhesion and deformability.
- Ideal for swimming pool and heavy foot traffic environments.
- Suitable for residential, commercial and infrastructure projects.

TECHNICAL INFORMATION APPLICATION PROPERTIES

TESTING PROPERTIES	TEST RESULTS
Tentative mixing ratio (powder : water)	7-8 liter water per bag
Open time	Min. 60 minutes
Adjustability	Min. 25 minutes
Pot life	Min. 90 minutes
Adhesive thickness	3-15 mm
Setting/trafficable/grouting time	24 hours

Performance properties as per IS 15477:2019 (TYPE 5, S2)

TESTING PROPERTIES	REQUIREMENTS	TEST RESULTS
Tensile adhesion dry condition	≥2.5N/mm ²	≥2.6 N/mm ²
Tensile adhesion at wet condition	≥1.0 N/mm ²	≥1.2 N/mm ²
Shear adhesion dry condition	≥2.5 N/mm ²	≥2.7 N/mm ²
Shear adhesion at wet condition	≥1.0 N/mm ²	≥1.2 N/mm ²
Shear adhesion at heat aging condition	≥1.0 N/mm ²	≥1.2 N/mm ²
Slip resistance	≤0.5 mm	≤0.5 mm
Deformability	2.5-5.0 mm	2.5-5.0 mm

Notes: test results are indicatives as per testing methods specified in standard condition & testing machine etc. Actual field performance will depends on installation methods and site condition.



White Cement & flexible polymer based powder putty. It is designed for carry out surface to ready for paint. Griffon wall putty achieve smooth, shiny and silky finish.it make easy to all short of color for painting

WALL PUTTY

ADVANTAGES

- Easy to apply on wall
- White smooth & finish putty
- Its make paint durable
- Protects paint from moisture
- Curing is not required
- Ideal for interior & exterior walls

MIXING RATIO

5-8 liter of water in 20 kg griffon wall putty bag.

COVERAGE

On rough masonry surface by putty knife 2 coats 1-1.5 sq. meter per kg. for up to 1.5 mm thickness in 2 coats.



Net wt.
20kg

Pu Adhesive Is Two Component Modified Polyurethan Epoxy Adhesive Designed For Fixing All Types Of Tiles & Stones Including Composites, Engineered/nano Stone, Metal & Glass Tiles On Interior & Exterior Floor & Wall.

PU ADHESIVE

AREA OF USE

Material to be fixed	On surface/substrate	Area of application
All types of ceramic tiles, terracotta tiles, vitrified tiles, glass mosaic tiles, large format tiles, marbel and natural stones, terrazzo, low thickness slab etc.	Cement based screeds, cement based plasters, Gypsum based renders, concrete surfaces, metal surface(iron. Steel, copper, aluminum etc.), existing tiles, stone, plywood, mdf & wooden derivative, rubber, pvc, glass etc.	Floor and walls, internal external area, window/door frame, vibrational area, kitchens, balconies, flat roofs, domes , terrace, domestic application, commercial application, industrial application.

FEATURES AND ADVANTAGES

- Easy to use- just mix part A and part B.
- Highly flexible and superior bonding strength.
- Slip/sag resistance provides hassle free application on vertical walls.
- Suitable for multiple substrate including metal, glass, plywood & dry wall.
- Ideal for agglomerates & moisture sensitive tiles / stones.

TECHNICAL INFORMATION

APPLICATION PROPERTIES

TESTING PROPERTIES	TEST RESULTS
Tentative mixing ratio	Part A 3,200 kg & Part B 800 gm.
Mixing material apperance	Off white paste
Open time	Min. 60 minutes
Adjustability	Min. 60 minutes
Pot life	Min. 60 minutes
Adhesive thickness	3-12 mm
Setting/trafficable/grouting time	24 hours

Performance properties as per IS 15477:2019 (TYPE 5, S2)

TESTING PROPERTIES	REQUIREMENTS	TEST RESULTS
Tensile adhesion dry condition		3.0 N/mm ²
Tensile adhesion at wet condition		≥1.5 N/mm ²
Shear adhesion dry condition		≥7.2 N/mm ²
Shear adhesion at wet condition		≥6.1 N/mm ²
Shear adhesion at heat aging condition		≥6.1 N/mm ²
Slip resistance		≤0.5 mm
Deformability		25 mm

Notes: test results are indicatives as per testing methods specified in standard condition & testing machine etc. Actual field performance will depends on installation methods and site condition.

EPOXY GROUT (GRIPOXY)



PRODUCT DETAILS

GRIPOXY is stain-free, hygienic, hard-wearing, impervious, epoxy resin-based grout with a high degree of resistance to chemical attack, abrasion and impact. The cured grout does not transfer taints to food and other stuff.

APPLICATION INSTRUCTIONS

This material is available in three-part, Part A (Resin), Part B (Hardener) and Part C (Filler). At first, mix Parts A and B thoroughly and as the mixing becomes uniform, add Part C and make it a consistent paste. Then apply this paste to substrates with its proper appliances.

EPOXY GROUT

Resin based 3 part epoxy tile grout for Wall tiles and floor tiles



TECHNICAL INFORMATION

PROPERTIES	RESULTS
Joint Width	2 To 25 mm.
Gel Time	60 Mins.
Setting Time	48 Hrs.
Specific Gravity	1.75
Water Absorption	Nil



Griffon Block Joining mortar is a factory prepared blend of carefully selected raw materials, Portland cement, graded aggregates and polymers. It is suitable to use with water to produce high strength thixotropic mortar, ideal for laying aerated light weight concrete, fly ash bricks, cement hollow blocks, cellular concrete blocks or smoothing over the block work surface in layers of up to 12mm thickness.

BLOCK JOINTING MORTAR

APPLICATIONS

For interior and exterior use for preparing thin bed block mortar for AAC and cellular concrete blocks.

TESTING PROPERTIES	TEST RESULTS
Color	Grey
Mixing ratio	9-10 liters per 40 kg
Open time IS 15477:2019	Approx. 20 minutes
Adjustability IS 15477:2019	Approx. 20 minutes
Pot life	Approx. 120 minutes
Initial & final setting time	240 min & 360 min
Tensile adhesion strength	≥ 1.00 N/mm ² (at the age of 28 days)
Compressive strength	12 Mpa (at the age of 28 days)

ADVANTAGES

- Easy to use- just add water to powder.
- Long working time
- Improved adhesion between two blocks
- Fast & economical

COVERAGE

Approximately 100-130sq.ft.per 40kg bag. Coverage is based on smoothness and evenness of the substrate, size of blocks used and the thickness of mortar used.

POLYMER MODIFIED TILE GROUT



PRODUCT DETAILS

Our polymer-modified TILE GROUT is a water-resistant and cement-based high-quality fine powder for interior and exterior. It is suitable for floor tile and wall tile joints.

APPLICATION INSTRUCTIONS

Mix 1kg of TILE GROUT with 250gms of water.

POLYMER MODIFIED TILE GROUT

Suitable for floor and wall tile joints



TECHNICAL INFORMATION

PROPERTIES	RESULTS
Pot Life @ 25°C	120 Mins.
Open Time	60 Mins.
Adjustability Time	15-20 Mins.
Initial Setting Time	2 Hrs.
Final Setting Time	12 Hrs.
Shrinkage	<0.1%

GROUT ADMIX PLUS



PRODUCT DETAILS

GROUT ADMIX PLUS is specially designed latex based grout hardner, to be used with sanded and unsanded grout. It improves the performance of cement grouts for all type of ceramic tiles, brick, marble, natural stone and agglomerate stone installations.

GROUT ADMIX PLUS

Suitable for making all the cement Based grout flexible



CLEANER



PRODUCT DETAILS

Our TILE CLEANER is a powerful heavy-duty acid-based cleaner for ceramic tiles, floors and walls. This cleaner can be easily applied to both horizontal and vertical surfaces, where it remains in contact with the area to be cleaned. It is designed for the removal of cement film residues, efflorescence and limescale.

NOTE

Do not use on surfaces that are not resistant to acids such as marble or terrazzo.
keep away from children.

TILE CLEANER

Fast acting tile cleaner for tiles



ADMIXTURE



PRODUCT DETAILS

Admixture GW+ is a specially formulated integral liquid waterproofing compound composed of surface-active plasticizing agents, polymer and additives. It is used as an additive for concrete, plaster and mortar.

PACK SIZES

1 LTR | 5 LTR | 20 LTR

200 LTR

Dosage

200 ML / 50kg cement use

GW+ ADMIXTURE

Integral liquid waterproofing compound
For concrete, plaster and mortar (admixture)



WATER PROOFING



PRODUCT DETAILS

SBR LATEX is latex for waterproofing and repairs. It also works as a admixture, bonding agent for mortar and screed.

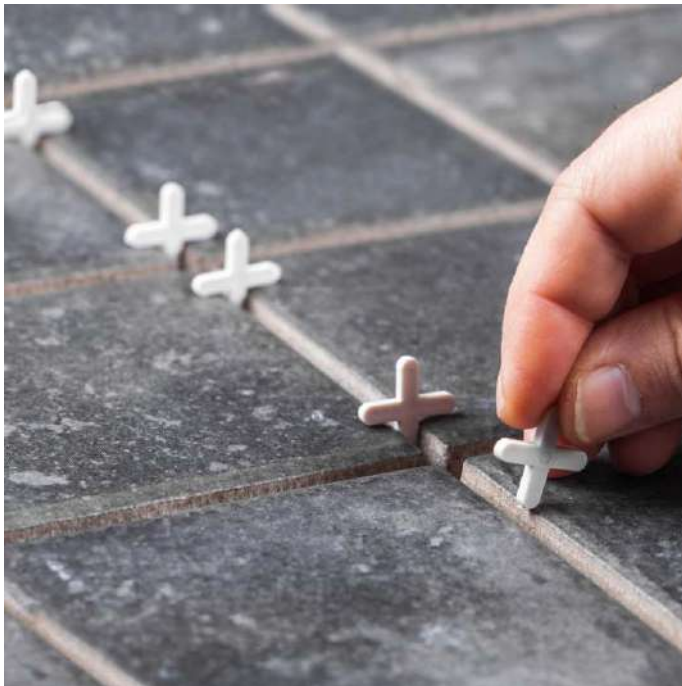
PACK SIZES

500 ML | **1** LTR | **5** LTR | **20** LTR
50 LTR | **200** LTR

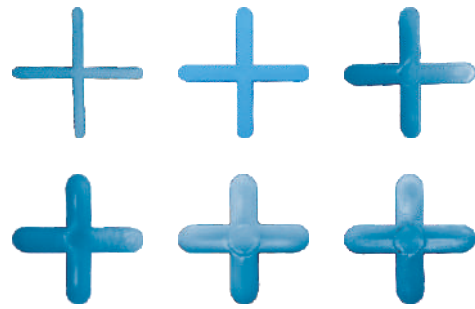
SBR LATEX

Latex for waterproofing and repairs,
Bonding agent for mortar and screed





ACCESSORIES



AVAILABLE SIZES

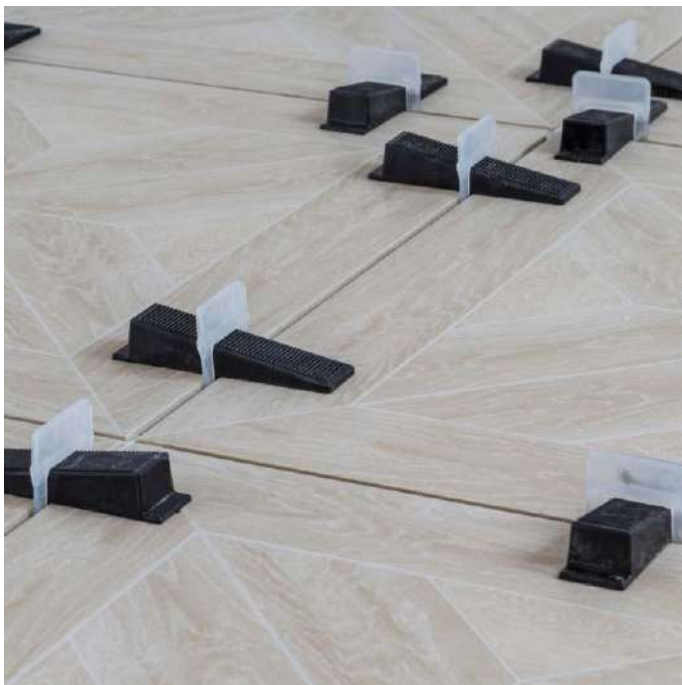
2mm | 3mm | 4mm | 5mm | 6mm | 10mm

PACK SIZE

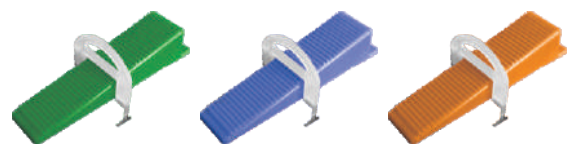
100 PCS / PKT

TILE SPACERS

To make space between wall tiles,
Floor tiles, etc.



LEVELER KIT



AVAILABLE SIZES

CLIP 50 PCS/PKT | WEDGE 50 PCS/PKT

TILE EQUALIZER

For tiles leveling and equalizing surface

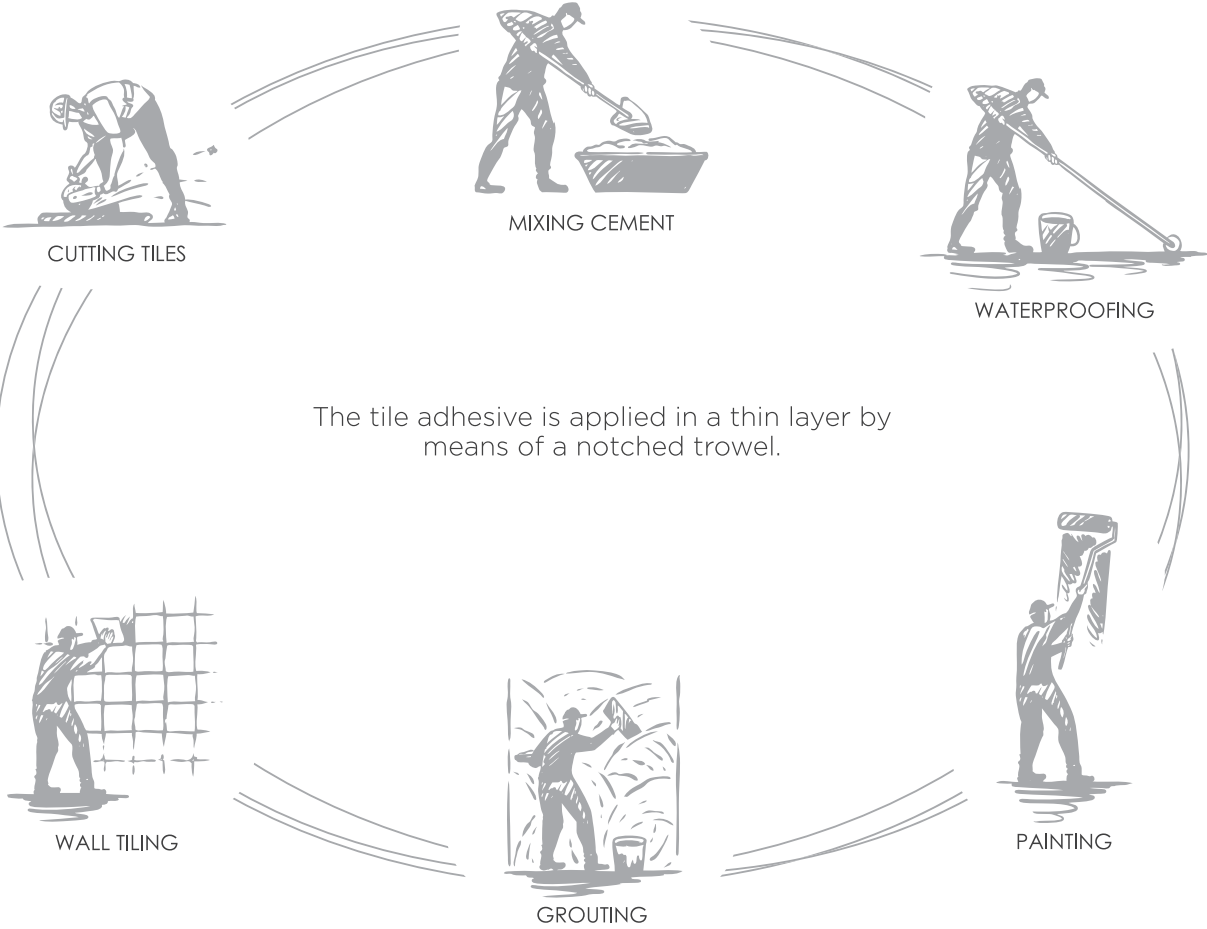


ACCESSORIES



TROWEL

For tile adhesiv leveling and equalizing surface



NOTE

Accept no liability for any loss or damage which arises as a result thereof.



Mfg. & Mktg. by:

GRIFFON CHEMICO INDUSTRIES

📍 Address: Maruti Industrial Estate, Opp. Cruze Step Riser,
Nr. Volex Polymer, Bela Rangpar, Jetpar Pipali Road,
Morbi - 363642 (Gujarat)

📞 **Contact.**
+91 90236 94194

✉️ **Email.**
info@griffonchemico.com
Sales@griffonchemico.com

🌐 **Web.**
www.griffonchemico.com